

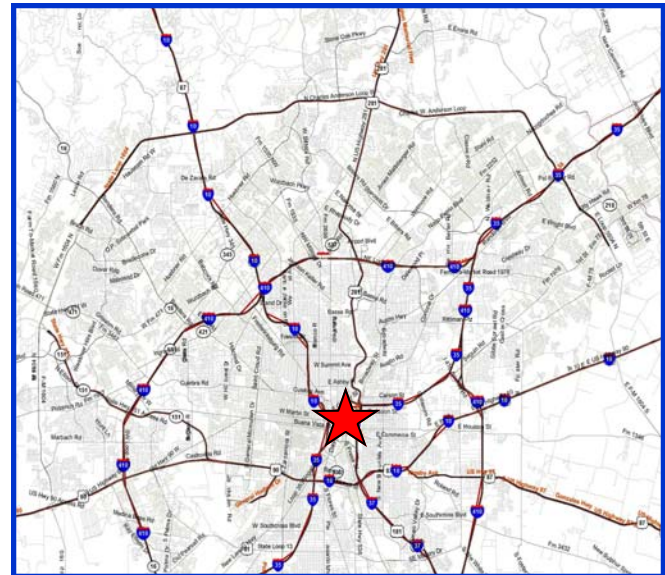
2ND GENERATION RESTAURANT SPACE FOR LEASE Houston Street



Location: Historic Houston St.
Riverwalk — San Antonio, TX

Size: 5,417 S.F.—2nd Generation Restaurant Space
Former Suede Lounge

Adjacent to The Palm and Bohanan's
Close proximity to major hotels/restaurants/attractions
Primary trade population (15 minute drive) over 715,000
8,000,000 visitors per year
1,000,000 convention visitors per year
Approx. 100,000 Downtown workers
Approx. 20,000 Downtown residents
Approx. 10,000 Hotel rooms within walking distance
Two live performance theatres with 3,500 seats
Over 65,000 students at 6 universities/colleges
Over 26,000 parking spaces in the area



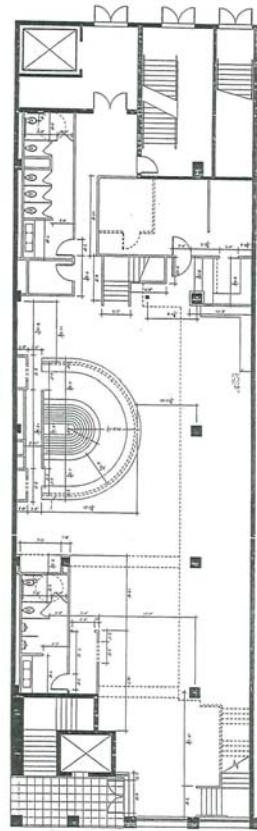
For Information Contact:

Don Thomas or Price Onken
210-841-3202 or 210.841.3243
dthomas@reatares.com or
ponken@reatares.com
www.reatarealestate.com

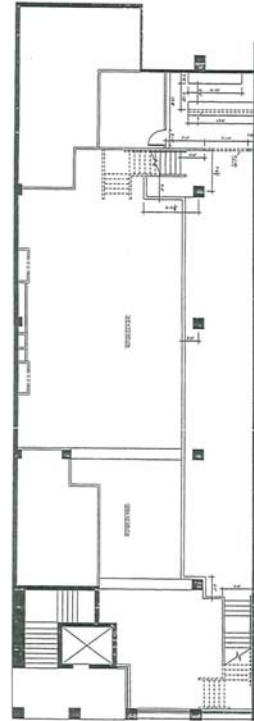
REATA Real Estate Services, LP
7330 San Pedro Ave., Suite 710
San Antonio, Texas 78216

REATA

① STREET LEVEL - FLOOR PLAN
SCALE: 1/8" = 1'-0"



② MEZZANINE - FLOOR PLAN
SCALE: 1/8" = 1'-0"



HOTELS

1. St. Anthony
2. Menger Hotel
3. Hyatt Regency
4. Marriott Rivercenter
5. Hotel Palacio
6. La Mansion del Rio
7. Emily Morgan
8. Crockett Hotel – Holiday Inn
9. Drury Inn and Suites
10. Hotel Valencia
11. Holiday Inn Riverwalk
12. The Westin
13. Gunter
14. La Quinta Convention Center
15. Watermark Hotel
16. The Riverwalk Vista
17. Hotel Contessa
18. Drury Plaza Hotel

RESTAURANTS

- A. Biga on the Banks
- B. Bohanan's
- C. Morton's
- D. The Palm
- E. Boudro's
- F. The Fig Tree
- G. The Little Rhein
- H. Le Midi
- I. Pesca on the River
- J. Fogo De Chao
- K. Acenar
- L. Salt Grass
- M. Landry's

Alamodome
Sunset
Station
Ruth's Chris
(All located
east of IH 37)
→

Convention
Center
Grand Hyatt
Marriott Riverwalk
↓